

The Michael Marks Charitable Trust Supplement

Recent acquisitions (2006–14) at the Department of Prints and Drawings at the British Museum, London



I. *View of a village*, by Johannes and Lucas van Doetecum after the Master of the Small Landscapes. c.1559–61. Etching, 13.4 by 19.7 cm. The series of 49 purchased with funds bequeathed by Mrs V.J. Playfair, 2011 (inv. no.2011,7073.26).



II. *Italianate landscape with herdsmen*, by Jacob Symonisz Pynas. c.1624. Pen and brown ink, brown and grey wash, over black chalk, 19.8 by 30.5 cm. Presented by Charlotte Gere, 2007 (inv. no.2007,7018.4).



III. *The stigmatisation of St Francis*, by Wenzel von Olmütz. c.1481–97. Engraving, 7.2 by 5 cm. The only known impression of this print. Presented by Christopher Mendez in honour of Antony Griffiths, 2011 (inv. no.2011,7107.1).



IV. *Ajax and Cassandra*, by Raphael. c.1509–11. Metalpoint (probably silverpoint) on pale pink prepared paper, 11.4 by 14.3 cm. Accepted by HM Government in lieu of Inheritance Tax and allocated to the British Museum, 2014 (inv. no.2014,7016.1).



V. *The penitent Magdalen*, by Bernardo Strozzi. c.1630. Red, black and white chalk, pen and black ink, on light brown paper, 22.6 by 28.5 cm. Presented by Jean-Luc Baroni in memory of his father, Giancarlo, 2013 (inv. no.2013,7029.1).



VI. *The approaching storm, Lake of Orta, Italy*, by Edward John Poynter. 1898. Watercolour over graphite, 26 by 36 cm. Purchased with funds from the Ottley Group, 2011 (inv. no.2011,7030.1).



VII. *A panoramic view of Rome from Piazza San Pietro in Montorio*, by Giovanni Battista Lusieri. c.1778–79. Pencil, pen and ink, watercolour, 55.2 by 97.8 cm. Purchased with the support of the Art Fund (with a contribution from the Wolfson Foundation), the Ottley Group, the Oppenheimer Fund, Jean-Luc Baroni, the Society of Dilettanti Charitable Trust and individual contributions, 2014 (inv. no.2014,7050.1).



VIII. *The swing*, published by Robert Sayer. 1786. Hand-coloured mezzotint, 35 by 25 cm. One of over 7,000 mezzotints from the collection of Christopher Lennox-Boyd purchased with the assistance of the National Heritage Memorial Fund, the Friends of the British Museum, the Art Fund, Mrs Charles Wrightsman, the Michael Marks Charitable Trust, and numerous individual donors, 2010 (inv. no.2010,7081).



IX. *Portrait of Louis XVI with added red Liberty cap*, after Joseph Boze. 1785 (print) and 1792 (hand-colouring). Etching and stipple, printed in brown, with hand-colouring, 30.1 by 18.5 cm. Purchased with funds from the Friends of Prints and Drawings, 2013 (inv. no.2013,7028.3).



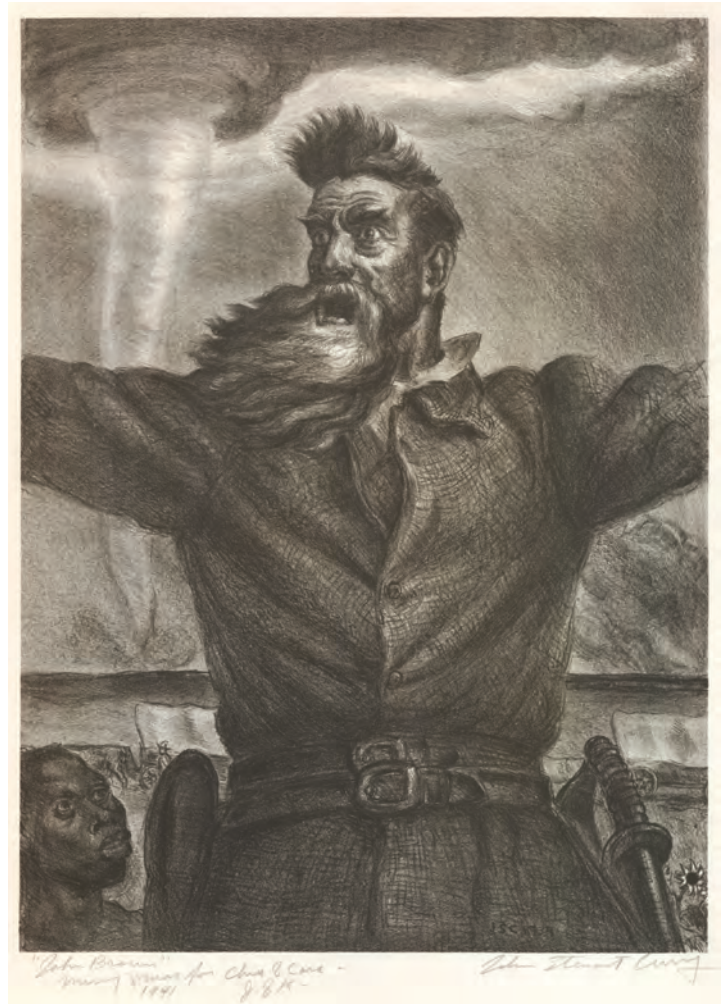
X. *Double-portrait of the painter Konrad Eberhard and his brother Franz*, by Johann Anton Ramboux. 1822. Lithograph with tint-stone, 31.8 by 34.4 cm. Presented by Charles Booth-Clibborn in honour of Antony Griffiths and Frances Carey, 2011 (inv. no.2011,7071.1).



XI. *Blind Minotaur led by a little girl in the night* (plate 97 of the Volland Suite), by Pablo Picasso. 1934. Aquatint worked with scraper to resemble mezzotint, drypoint and burin engraving, 24.7 by 34.5 cm. Presented by the Hamish Parker Charitable Trust in memory of Major Horace Parker, 2011 (inv. no.2011,7096.97).



XII. *Nude with beads* (Frida Kahlo), by Diego Rivera. 1930. Lithograph, 41.8 by 27.5 cm. Purchased with funds from the Aldama Foundation, 2008 (inv. no.2008,7062.2).



XIII. *John Brown*, by John Steuart Curry. 1939. Lithograph, 37.4 by 27.6 cm. Purchased with funds from Mr and Mrs James A. Duncan, 2007 (inv. no.2007,7048.1).



XIV. *The Scottish City – The Gorbals*, by John Minton. 1945. Pen and ink, graphite, coloured crayons, watercolour and gouache on card, 56.2 by 81.5 cm. Purchased with funds from the David and Liza Brown Bequest Fund through the Art Fund, 2008 (inv. no.2008,7010.1).



XV. *Still life under the lamp*, by Pablo Picasso. 1962. Colour linocut in black over green, red and yellow, 52.8 by 63.9 cm. The finished linocut acquired with the eight progressive proofs, together with three progressive proofs and the finished linocut of *Jacqueline reading* from 1962. Purchased with the support of the Art Fund, the Patrons of the British Museum, James & Béatrice Lupton, the Volland Group, Hamish Parker, Simon & Virginia Robertson and individual contributions, 2013 (inv. no.2013,7075.9).



XVI. *Two standing Tahitian women*, by Paul Gauguin. 1894. Watercolour monotype, with dedicatory pencil inscription on mount to the English artist Robert Bevan 'à l'ami Bevan / PGO - 1894', 15 by 14 cm. Accepted by HM Government in lieu of Inheritance Tax and allocated to the British Museum, 2011 (inv. no.2011,7089.1).



XVII. *Stately plump Buck Mulligan*, illustration for James Joyce's *Ulysses*, by Richard Hamilton. 1948. Watercolour, pen and ink, 57.8 by 39.7 cm. Accepted by HM Government in lieu of Inheritance Tax and allocated to the British Museum, 2013 (inv. no.2014,7018.5).



XVIII. *Going to dark bed*, illustration for James Joyce's *Ulysses*, by Richard Hamilton. 1949. Pen and ink and wash, 39 by 57 cm. Accepted by HM Government in lieu of Inheritance Tax and allocated to the British Museum, 2013 (inv. no.2014,7018.22).



XIX. *Partisan*, by Georg Baselitz. 1965. Yellow ochre gouache, grey wash, charcoal, graphite, white and pink pastel, 52 by 39 cm. Presented by Count Christian Duerckheim, 2013 (inv. no.2013,7043.10).



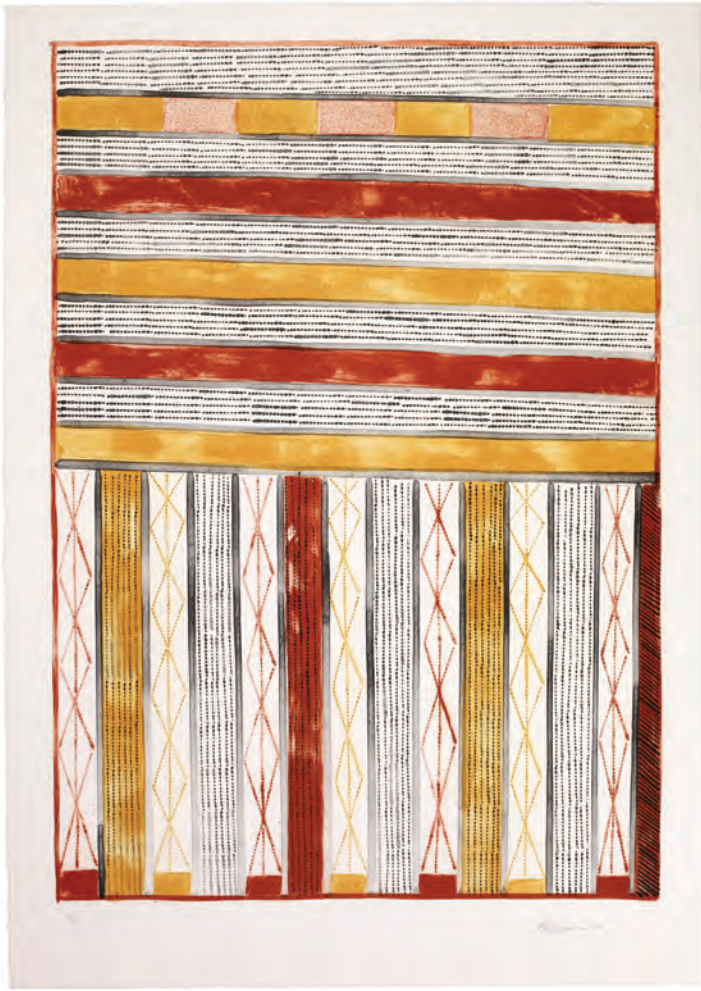
XX. *Nancy and Jim Dine*, by R.B. Kitaj. 1970. Colour screenprint, 84.5 by 39.2 cm. One of 293 graphic works bequeathed by the artist, 2010 (inv. no.2010,7062.38).



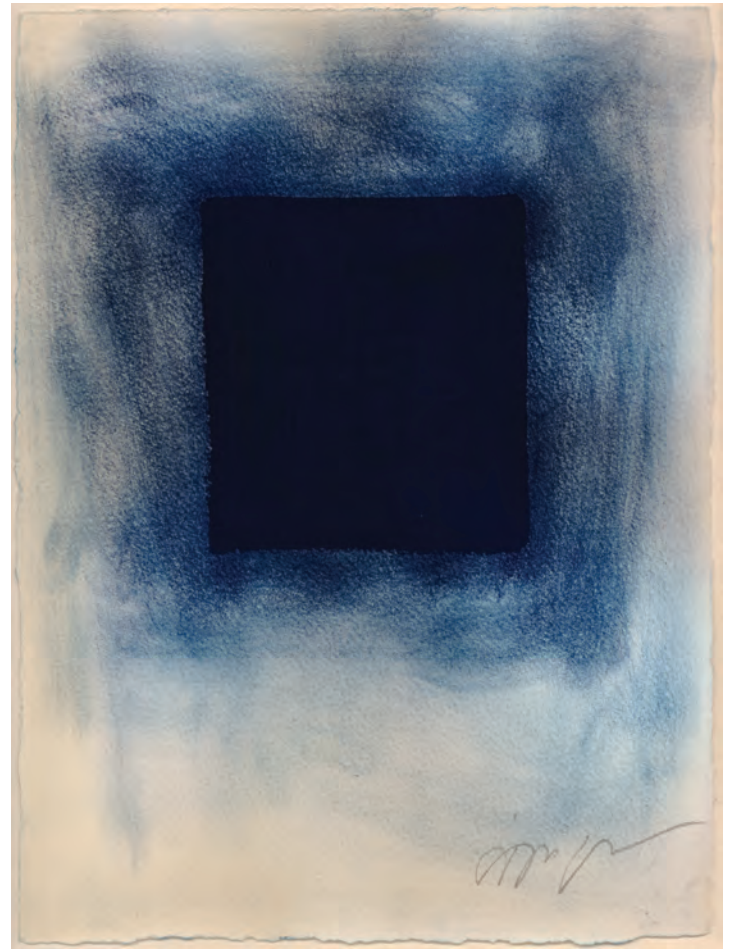
XXI. *Self-portrait with yellow glasses*, by Michelangelo Pistoletto. 1973. Photographic screenprint printed in colours on a sheet of polished stainless steel, 100 by 70 cm. Purchased with funds from an anonymous donor, 2006 (inv. no.2006,1129.1).



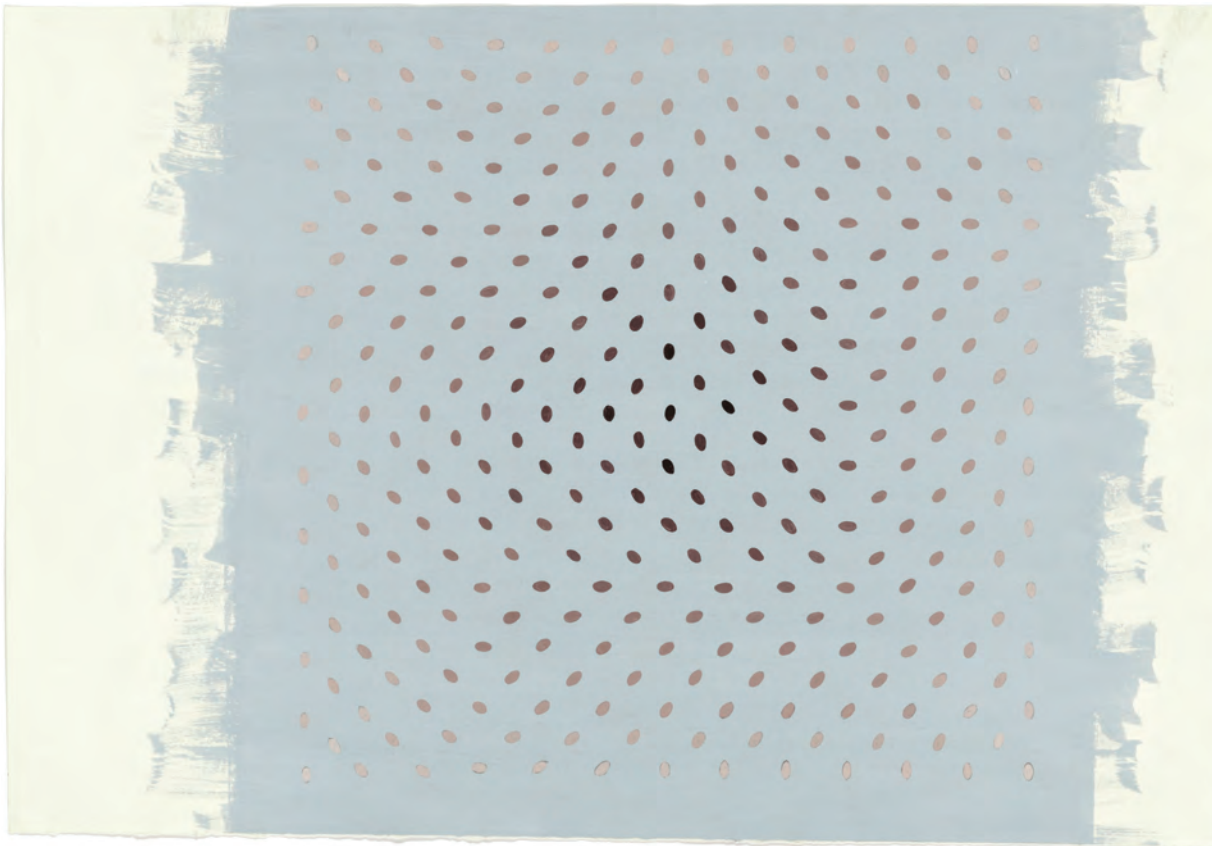
XXII. *Self-portrait*, by Frank Auerbach. 2010. Charcoal, 77.3 by 58.0 cm. Presented by the artist, 2011 (inv. no.2011,7011.1).



XXIII. *Body Painting no.1*, by Pedro Wonaeamirri. 2004. Lithograph printed from three plates, 86 by 61 cm. Purchased from the Australian Print Workshop and presented by Gordon Darling, 2008 (inv. no.2008,7019.1).



XXIV. *Blue square*, by Anish Kapoor. 1996. Pigment on paper, 38.5 by 28.7 cm. Purchased with funds from the Rootstein Hopkins Foundation, 2008 (inv. no.2008,7007.1).



XXV. *Untitled (related to 'Deny' and 'Nineteen Greys')*, by Bridget Riley. 1966–67. Gouache, 35 by 50.5 cm. Presented by the artist, 2014 (inv. no.2014,7027.2).